

Dragger™ Assembly Instructions  
Model: S-1 Tail-Dragger Dragger®

**Assembly Note:** All reference to “right” and “left” orientation is made while standing behind the tug and looking forward.

Remove all items from shipping container and spread out neatly on floor. Contents include lower frame, upper frame (handle), 2 wheels, 2 cotter pins (in zip lock bag in center of wheel).

**Step 1:** Assemble handle using the bolts provided. Mount handle on top of main frame. Insert bolts from the top. Hand grips can be up or down depending on user preference.

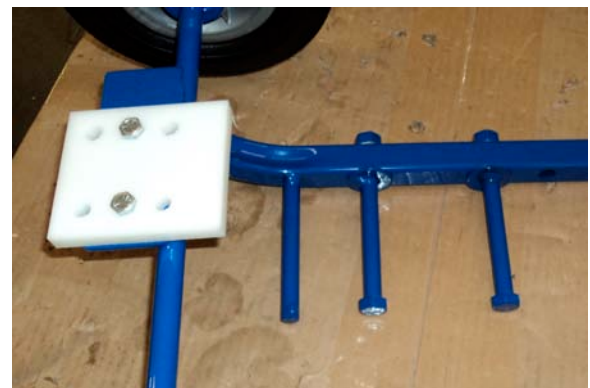
**Step 2:** Adjustment Bolts: There are two (2) bolts behind the welded pin towards the front of the frame. Only one bolt is required for most uses. However, you may use the second bolt for RV or similar aircraft that have a smaller tail wheel.

**Note:** The welded pin towards the front of the frame will be positioned in front of the tail wheel when in use.

**Step 3:** Adjust the white nylon plate over the front of the frame to allow enough room for the tail wheel. The block keeps the tail wheel from rolling over the front of the tug frame when in use. Position the nylon plate as close to the front of the tail wheel as possible without touching it.

**Step 4:** Remove the small plastic bag of parts from the inside of the wheel. Mount the tug wheels to the frame with the flush side of the wheel to the outside of the frame. Install each cotter pin through the hole at each end of the axle and bend to hold in place.

Refer to <http://dragger.com/tail-dragger-draggers> for additional information on loading the aircraft onto the S-1 Tail-Dragger Dragger.



**Airtug, LLC is not responsible for aircraft damage sustained when proper clearance is not maintained by the operator between the tug and the aircraft.**